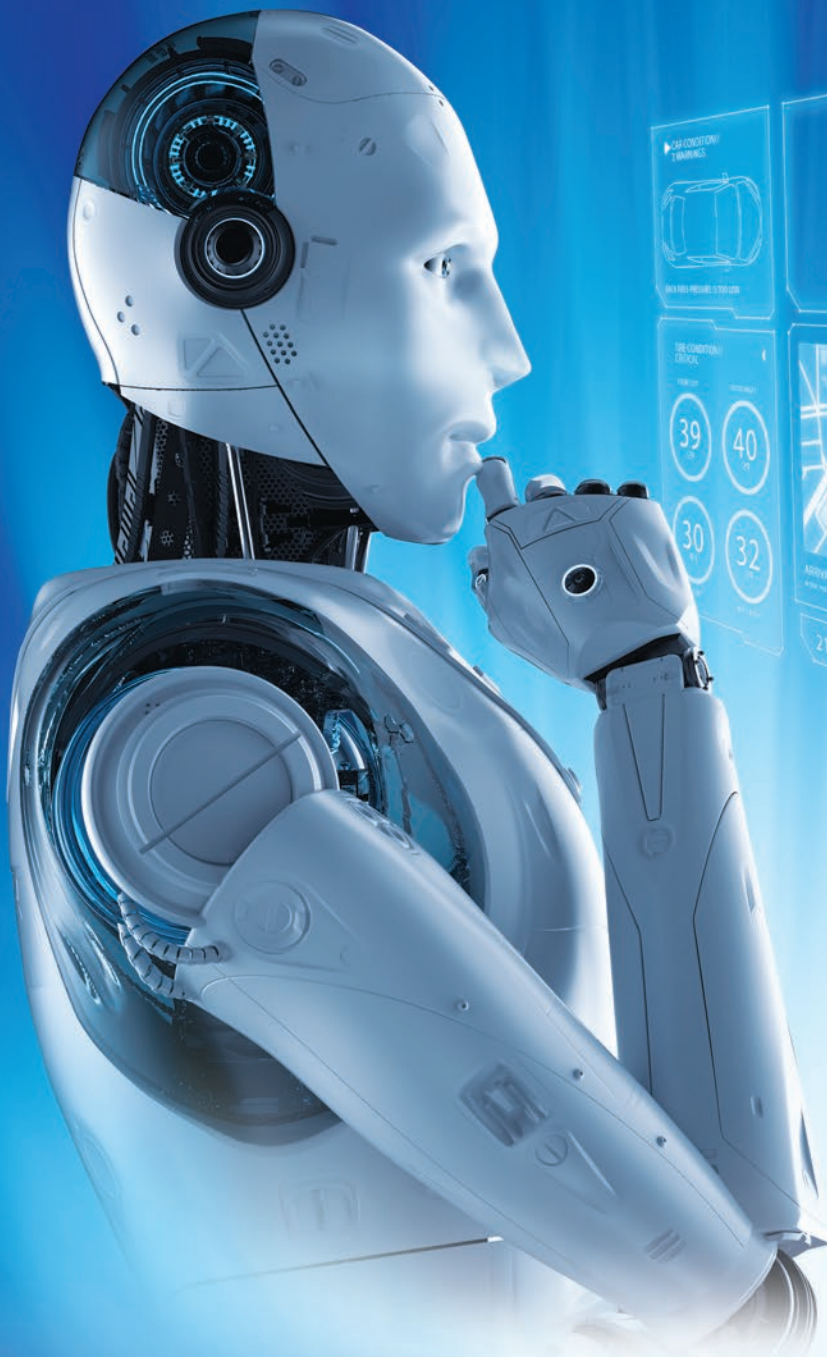




WHERE'S MY RIDE

Artificial Intelligence Inside



AUTO RIDER IDENTIFICATION

SMART BEACON GUIDANCE

AUTO ELIGIBILITY VERIFICATION

AUTO FARE CHARGING

POWERFUL RIDER APP

INTRODUCTION

Where's My Ride is a complete set of rider interactivity tools that enhance the rider experience and ensure smooth, AI-assisted, and automated interactions at every step of the rider's journey. More than just a smartphone app, the artificial intelligence in Where's My Ride integrates multiple cutting-edge technologies into a single transit software package such as Bluetooth Low Energy Beacons, facial recognition, AI-assisted automated processes, and more. From verifying eligibility and resource availability at time of booking, to on-boarding to the vehicle, tracking trip progress, and automated charging of funds, Where's My Ride is ready for service by transit agencies and providers looking to step into the next level of autonomous service and vehicle technologies.

RIDER IDENTIFICATION & VERIFICATION

- Accurate rider identification via facial recognition or QRC
- Rider onboarded automatically and greeted by name
- Auto processing and charging of split fares to linked payment methods
- Offboard riders automatically by detecting proximity of rider to vehicle and destination
- Reduce fraud through accurate automatic data capture

AUTOMATED WORKFLOW

- Booking by smartphone app, virtual agent, and web decreases call center work by 80%
- Auto verification of riders and trip eligibility constraints
- Automatic trip status notifications sent to rider reduce no-shows and cancellations
- Autonomous onboarding, split payment processing, and offboarding
- Reduce operational burdens by decreasing manual inputs by drivers and staff
- Improves the consistency and reliability of data, reducing fraud

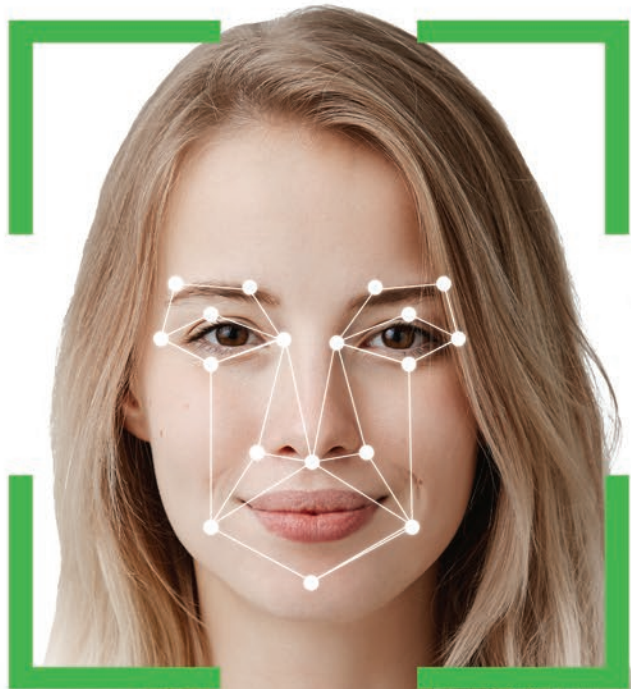
INTEGRATED TOOLS

- Complete rider and trip eligibility system
- Bluetooth beacons alert and guide riders to their vehicle
- Communicate with drivers through the app
- Virtual Agent assists riders over the phone in every stage of their trips
- Smartphone app assists rider throughout the trip
- Preferred payment methods automatically charged via digital wallet

VIRTUAL CALL CENTER AGENT

- Identifies riders by phone number or ID number
- Personalized greeting with riders' name and ride status
- Provides ETA of current trips
- Allows booking and cancelling of trips





FACIAL RECOGNITION

- In-vehicle cameras recognize riders using stored rider profile photos
- Auto verifies riders' trips attributes to ensure correct boarding
- Securely on-boards riders, charges fare, and processes trip status
- Simultaneously use facial recognition with other technologies for multi-factor authentication

QR CODE VERIFICATION

- Read QR codes from riders' smartphone displayed in rider app or webpage
- In-vehicle camera scans QR code and verifies rider Id and rider trips
- Static QR codes printed on Rider ID cards or in app provide rider-specific information
- Dynamic QR codes provide trip-specific information
- Powerful and accurate means of eligibility verification for each ride
- Securely on-boards riders, charges fare, and processes for fraud prevention

BLUETOOTH LOW ENERGY BEACONS

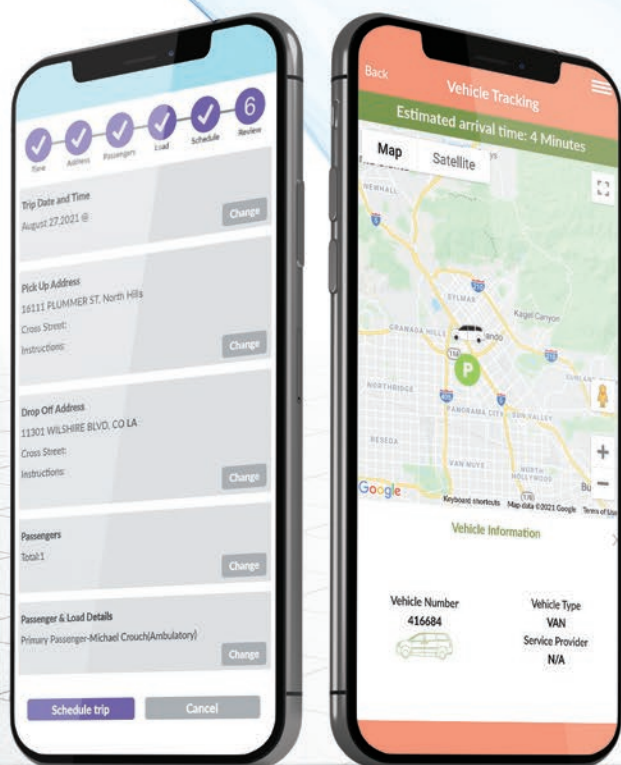
- Equip transit hubs, service vehicles, and other points of interest with BLE Beacons
- By interacting with beacons, riders' smartphones navigate riders to their vehicles with step-by-step guidance
- Prevents missed rides and erroneous onboarding
- Guide riders through transit hubs and other points of interest
- BLE, facial recognition, and QR codes work in tandem

ELIGIBILITY AS A SERVICE

- Can be deployed as a standalone system
- Easy and integrated online rider application process
- Configure various service eligibility constraints such as rider needs, geography, and more
- Alerts riders and administrators to eligibility renewals, expirations and status changes
- Customizable forms, reports, and monitoring of applications for office use

DIGITAL WALLET

- Digital wallet created for each rider to link payment methods and maintain a balance
- Deposit funds via app, phone call, or in-person with credit card, cash or other methods
- Displays current balance, past usage records and receipts
- Secure and automatic payment after positive rider identification at on-boarding time
- Flexibly splits fare and copay between rider and funding source





IT Curves develops innovative transportation management software, empowering transit agencies, paratransit, NEMT, and private transportation companies to manage their transportation services using the latest integrated technologies and strategies. Our software solutions work with existing infrastructure or as software-as-a-service on the cloud to provide transportation operations enhanced solutions for managing passengers, dispatch, routing, communications, financial transactions, vehicle fleets, drivers, and more.

RIDES TO HEALTH



PARATRANSIT



MICROTRANSIT



WHERE'S MY RIDE



TAXI BROKER



INTEGRATED TELEPHONY

8201 Snouffer School Rd
Gaithersburg, MD 20879

301.208.2222

info@itcurves.net
www.itcurves.net